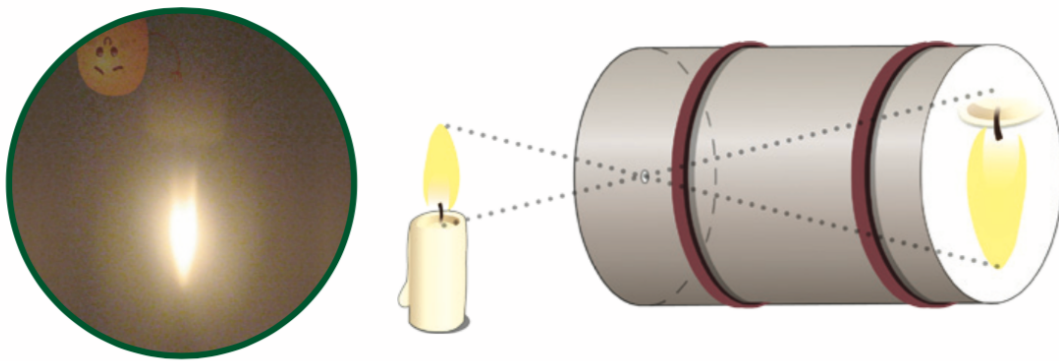


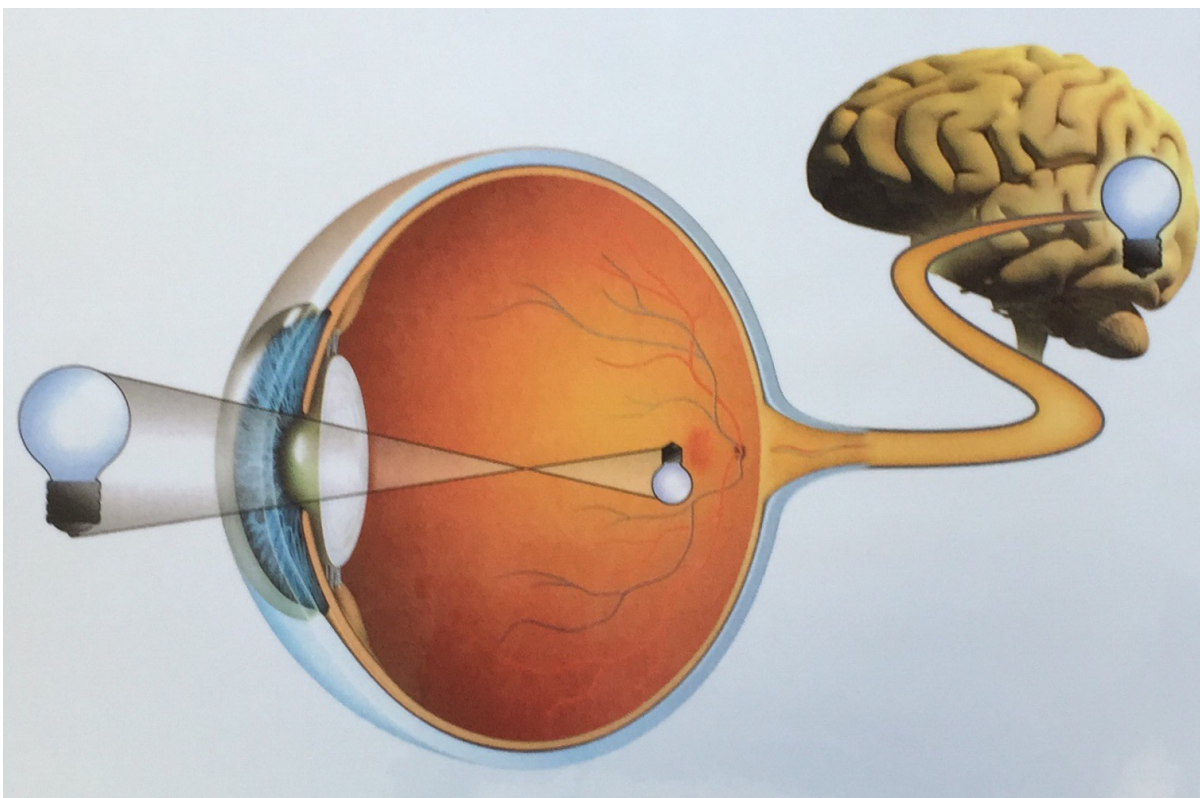
Picture with the pinhole camera



Quelle: www.vdini-club.de

The light goes into the small opening of the pinhole camera in a straight line. The lower point of the candle flame is projected to the top of the screen and the upper point of the candle flame is projected onto the lower part of the screen. So there is a reversed picture.

How our eye works



Quelle: Augenzirkus - Fantastische optische Täuschungen, Stefanie Zysk, Compact Verlag GmbH, 2015

Our eye works like a pinhole camera. Our brain turns the reversed picture around to the right way.